



## STATEMENT OF QUALIFICATIONS



D COR INTERIOR DESIGN INC.

Design | Care | Maintenance

# DESIGN MATTERS!

The design of the workplace impacts performance, employee engagement, and innovation. Our services enhance design, facility optimization and business operations. We develop solutions that dynamically impact any work environment.

## CONTENTS

Company Overview

Services

Who We Are

Team Resume

Capacity & Capability

Process Approach

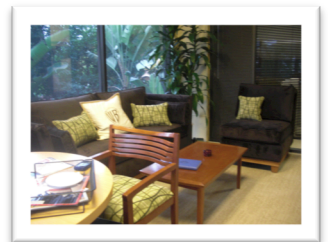
Project Portfolio

Client List

# Company Overview

**To be a project resource with our three-pronged approach of enhancing interior aesthetics, improving quality of life, and ensuring public safety through design excellence, facility services, and quality furnishings; with a focus on sustainable growth for the lifecycle of our client's facilities and brands.**

Since 1997, Décor Interior Design, Inc. provides comprehensive interior design services that reflect the built environment and support the present and future needs of our clients. Whether planning an interior remodel, specifying furniture and window treatments or designing corporate offices Décor meets the ever-evolving needs of any project. Our projects are well-thought, distinctive interiors that are embraced by stakeholders, staff, and the general public. Our team will root a client's brand, values and identity in all its workplace solutions.



Décor Interior Design, Inc. offers complete architectural, interior design and FF&E services.

### **Architectural Design**

Programming  
Conceptual and Schematic Design  
Design Development  
Value Engineering  
Cost Estimating  
As-Built Field Verification  
Equipment Layout and Utilities Matrix  
3D Modeling and Animation  
ADA Disabled Access Compliance Evaluation

### **Land Use and Entitlements**

Master Planning  
Feasibility Studies  
Site Evaluation and Selection  
Code and Ordinance Compliance Evaluation

### **Interior Design**

Tenant Improvement Design  
Space Planning  
Finish and Materials Selection

Furnishings Selection  
Artwork Coordination  
Signage and Wayfinding Programs  
Custom Millwork Design  
Custom Furniture Design

### **Bidding and Contract Documents**

Construction Documents  
Furniture and Finish Specifications  
Bidding and Contract Documents

### **Construction Administration**

Client Approvals and Permitting  
Contractor Submittal Review

### **Special Services**

Acoustics and Vibration  
Audio Visual Design  
Code Evaluation  
Energy Compliance  
LEED Certification



## WHO WE ARE

Décor Interior Design, Inc. is a Los Angeles-based, HUBZone, SBA 8(a), woman-owned facility resource company with considerable experience in designing corporate offices, furnishing healthcare interiors, and maintaining government facilities. Since 1997, Décor has supported facility managers and building owners by offering interior design, quality furniture, specialty construction, custodial and grounds keeping services that respond to not only budget constraints, but provide long-term strategies for growth and sustainability. Décor's products and services seamlessly transition from design and specification to installation and upkeep.

We are architects, interior designers, planners, and coordinators that are dedicated to meeting the design challenges of tomorrow. Through our forward thinking and integrated approach we pool the talents of design, construction and facilities and help clarify our clients needs and goals. Our staff includes licensed architects, certified designers and project planners. Our services are oriented to our clients' time and budget. We approach projects with imagination and flexibility and are committed to good design.

## Resumes

Ronda Jackson, IIDA, ASID, CID

Tamara Smith Allied ASID

Nichole Smith

Derrick Burnett

Atie Saado, Allied ASID

Shelby Ray

## Ronda Jackson, IIDA, ASID, CID

Principal and Certified Interior Designer



### EDUCATION

UCLA Interior and Environmental Design Program  
 UCLA Anderson School of Business Management Development Program  
 Turner Construction Management Program  
 Goldman Sachs 10,000 Small Business Program  
 University of Washington Fosters School of Business

### REGISTRATION

NCIDQ Certified: 022450  
 CCIDC Registered  
 CSLB 974074

### YEARS OF EXPERIENCE

18 years experience design, furnish, and maintaining commercial interiors

### AFFILIATIONS

American Society of Interior Designers  
 International Interior Design Association  
 Women Business Enterprise Council

Native of Chicago, Illinois Ronda Jackson is a licensed contractor, certified interior designer and no stranger to hard work. Ronda's services and products seamlessly transition from design specification to installation and upkeep. Projects include the federal government and Fortune 500 companies; and has completed projects in eight states.

Ronda's client portfolio illustrates her considerable experience in designing commercial offices, health care space planning and design, government agency facility support. She has skills in planning, sourcing and purchasing, supported by project management and various CAD platforms.

### PROJECT EXPERIENCE

US Air Force  
 Department of Veteran Affairs  
 Disney Worldwide  
 General Services Administration  
 Ronald Reagan Foundation  
 Warner Bros

### SELECT HONORS & AWARDS

BBALA Entrepreneur of the Year, US  
 Chamber of Commerce Blue Ribbon Award  
 The List: Top Minority Firms Los Angeles Business Journal, June 19, 2014  
 INC 5000 List Fastest Growing Company  
 ICIC Top 100 List Fastest Growing Company

### PUBLICATIONS

From Rocky and Reckless to Rewards  
 Huffington Post, March 2013

## **Tamara Smith, Allied ASID**

Interior Designer



Tamera designs with a keen awareness to the project's culture and needs. She is responsible for the Furniture, Finishes, and Equipment requirements in all phases of a project. This includes development of the initial conceptual and schematic design, design development, preliminary and final FF&E budgets, complete specifications including thorough interface with vendors and purchasing agents, selection of art and accessories, and final installation.

### **EDUCATION**

CSLUB, Fine Art Architectural interior Design

### **AFFILIATIONS**

American Society of Interior Designers  
NEWH The Hospitality Industry Network

### **YEARS OF EXPERIENCE**

30 years of experience in commercial and hospitality interior design

### **PROJECT EXPERIENCE**

Westin Bonaventure Hotel, Los Angeles, CA  
Cheyenne Mountain Conference Resort,  
Serrano Hotel Restoration,  
Sun Route Resort, Osaka, Japan  
Silks Restaurant San Francisco, California\*  
Mirage Resorts International Headquarters  
Bali Beach Hotel

## Nichole Smith

Entitlement Specialist



Nichole Smith specializes in layered land use entitlements, permit expediting, and construction project management. Having entitled, permitted, and provided project management for over 50 projects, totaling over \$215 million in real estate investments. She prides herself in taking development from conception to occupancy.

### EDUCATION

UC Berkeley Comparative Literature  
USC Ross Real Estate Development Program

Nichole excels at engaging key community members and connecting developments to their surrounding communities. Projects include housing projects, commercial developments, the Port of Long Beach, charter schools, alcohol serving uses, and entertainment venues.

### REGISTRATION

CA RE Broker License No. 01334809

### YEARS OF EXPERIENCE

12 years of project management and entitlement consulting experience in commercial real estate

### PROJECT EXPERIENCE

99 Cent Only  
Academy of Science & Engineering  
Charter High School  
Laugh Factory  
Port of Long Beach

### AFFILIATIONS

Urban Land Institute Los Angeles  
Southern CA Association of Non-Profit Housing

### SELECT HONORS & AWARDS

Team Winner 2014 USC Ross Minority Program in Real Estate Development Competition

## **Derrick Burnett, PM**

Architectural Designer



### **EDUCATION**

CSU Chico Construction Management  
CalPoly Pomona Environmental Design  
Construction Technology  
NNWRC Project Management

### **YEARS OF EXPERIENCE**

25 years of experience in commercial and residential building design and project management.

### **AFFILIATIONS**

National Organization of Minority Architects  
Neighborhood Housing Services of LA County

Derrick designs new buildings, extensions or alterations to existing buildings and advises on the restoration and conservation of properties. He is responsible for redevelopment schemes and the design of the surrounding landscape and spaces.

He works closely with clients and users to ensure that projected designs match requirements and are functional, safe and economical. He is involved in projects from start to finish and works construction professionals, surveyors and engineers.

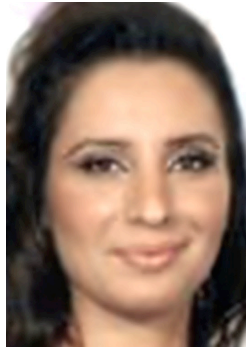
Derrick produces drawings and specifications that the construction team works to implement.

### **PROJECT EXPERIENCE**

Disney Corporate Real Estate  
EDD WorkSource Center  
Dorothy Chandler Mansion Historical Monument  
Metro Division Sheriff Dept Headquarters  
FEMA  
Governors Office of Emergency Services  
Faithful Central Bible Church  
Center for Sustainable Communities

## **Atie Saado**

Project Designer



### **EDUCATION**

Woodbury University Interior Architecture  
Glendale Community College Fine Arts

### **YEARS OF EXPERIENCE**

6 years of experience on commercial  
interior design projects

### **AFFILIATIONS**

American Society of Interior Design

Atie has architectural design background in hospitality, entertainment, education, healthcare, and transportation.

Atie's responsibilities will include coordination and design of technical spaces and documentation. She will also serve as the day-to-day contact with the vendors, contractors, and the other consultants to ensure a transparent and well-coordinated project. Atie is an energetic team player, detail oriented and skilled in the coordination of consultants and work of the Firm.

She also holds architectural client meetings, field inspections, evaluation of construction documents, floor plans, and to ensure door opening meets the functional aesthetic requirement of the project. She also develops' finished hardware specification and provides project data.

### **PROJECT EXPERIENCE**

Warner Bros

SIKA

University of Southern California

Residential Design

## Shelby Ray

Project Coordinator



Shelby's approach to coordination and client relation is customer focused. She is responsible for coordinating deadlines, follow through, and completion in all phases of a project. This includes projection of lead-times, quote summaries, shipment verifications, and overseeing client and vendor relations.

### EDUCATION

Mount San Antonio College School of Business  
Los Angeles Community College Business Management Program

Shelby is responsible for coordinating projects in varying size and complexity. She reports directly to senior project manager, in organizing project activities. Shelby resolves operational conflicts and identifies project process improvements.

### YEARS OF EXPERIENCE

10 years of experience in process improvement and expediting

### PROJECT EXPERIENCE

Residential Renovations  
Warner Bros  
SIKA  
Ronald Reagan Foundation  
LA Job Corps

# Approach

---

## PROCESS APPROACH

### Step 1

Provide Effective and Efficient  
Solutions

#### ***First, we look at the big picture.***

We take the time to understand our client's needs, desires, and operations, define the project constraints and problems at hand, and collect all of the information required to develop sound solutions and strategies. Doing a complete assessment at the beginning of a project sets the stage for successful implementation.

### Step 2

Collaborate without Sacrificing Focus

#### ***Then we develop our project plan and assemble our team.***

Every project requires a unique team of employees and vendors. Once we have developed the goals, objectives, budgets, constraints, and tasks for the project, we identify partners that are best qualified to fulfill the needs at hand.

### Step 3

Drive Innovation Through Choice

#### ***Finally, we manage and execute.***

We will provide all management, supervision, labor, materials, supplies, transportation, and equipment, and will plan, schedule, coordinate, and assure effective performance. Success to us is not only achieving our deadlines and budget goals, but to do so to at our client's full satisfaction. We strive to achieve a respectful, ethical, and rewarding experience for all concerned.



# Project Portfolio

Industry Partners  
Architecture & Interior Design  
Project Management  
Client Partners  
Service Areas

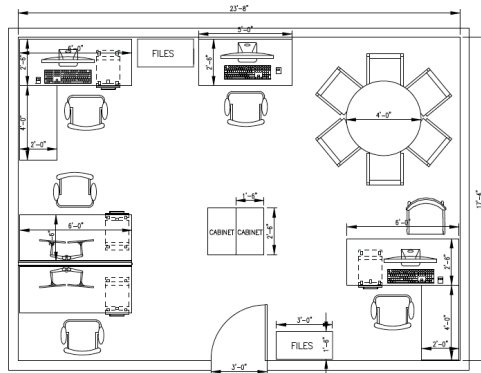
## INDUSTRY PARTNERS

### Furniture and Accessories

ABCO	Globalviews	Legacy Furniture
Accent Decor	Gordon International	Lencore Sound Masking
AIS (Affordable Interior Systems)	Great Openings	Lowenstein
All Seating	Halcon	Lyon Metal Products
Alle Accessories	Hale	Magna Design
Allemuir	Haller (USM)	Martin Bratrud
American Seating	Hamilton Sorter	Mayline
Arcadia	Harter	National
Achitex	Haworth	Nemschoff Chair, Inc.
Bernhardt	HBF	Neocase
Brandrud	Highmark Seating	Nevers
Bretford	Highpoint Furniture	Nevins International
Brueton	Hightower	Now Seating
Burton James	Hillcrest	Nucraft
Cabot Wrenn	Hon	Office Specialty
Calligaris	Howe Furniture	OFS
Capel Rugs	Humanscale	Paoli
Carolina	ICF	Patrician
Centiva	Ergonomics	Phillip collections
Claridge	Indiana Desk	Springs Window Fashion
Clarus Glassboards	Inline	Stylex
Coalesse	Integra	Symphony
Creative Wood	Intensa	Thonet
Dauphin	Inwood	Three H
David Edward	Izzy Designs	Tropitone
Davis Furniture	Janus et Cie	Tuff Edge
Douglass	Jofco	Tuohy
dTank	Johnson Tables	United Chair
Egan	JSI	Uttermost
Elfa	Keilhauer	Versteel
ERG	KI	Vitra
Evolve	KRON	Via Seating
First Office	Krug	Walter Knoll
Friant	Kwik File	Watson Desking
Furniture Lab	Lacasse (Office Furniture)	WGI
Garrett Leather	La-Z-Boy	Whitehall
Global Healthcare	Landscape Forms	Workrite Ergonomics
		Zoom Seating

## ARCHITECTURE & INTERIOR DESIGN

### Ronald Reagan Foundation



40 Presidential Drive  
Simi Valley, CA  
SQ. Feet: 7500  
Office Reconfiguration  
Space Planning  
FF&E Specification  
Project Estimating

### Pan Pacific Mechanical



18250 Euclid St.  
Fountain Valley, CA  
Sq. Feet: 25,000  
Interior Design  
Wall Graphic  
Ergonomic Accessories

### San Diego Unified Port District



3165 Pacific Highway  
San Diego, CA 92101  
Sq. Feet: 20,000  
Recommendations for:  
Color Palette  
Floor Coverings  
Window Treatments

## ARCHITECTURE & INTERIOR DESIGN

### Faithful Central Bible Church



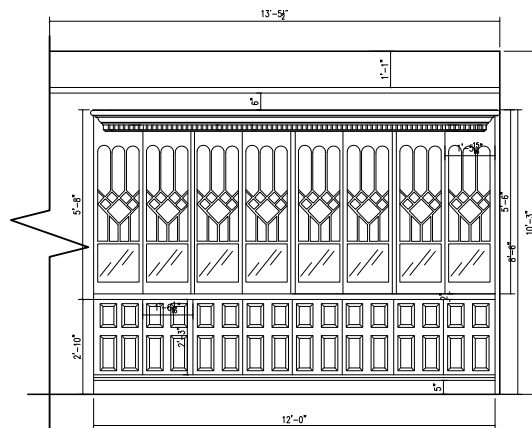
400 West Florence  
Inglewood, CA  
SQ. Feet: 43,000  
Interior Design  
Space Planning  
Finish and Material Selection  
FF&E Specification  
Project Estimating

### Warner Bros



4000 Warner Blvd  
Burbank, CA  
Sq. Feet: 225  
Interior Design  
Space Planning  
Build Standard Spec  
Ergonomic Accessories

### University of Southern California



2653 Hoover Street  
Los Angeles, CA 90007  
Sq. Feet: 20,000  
Shop Drawings  
Color Palette  
Wallcoverings  
Window Treatments

## **CLIENT PARTNERS**

### **COMMERCIAL**

- US Bank
- Disney
- Good Samaritan Hospital
- Warner Bros
- Golden State Water
- NBA All-Star Game
- Childnet
- Cantwell-Anderson
- Santa Monica College
- Los Angeles Community College

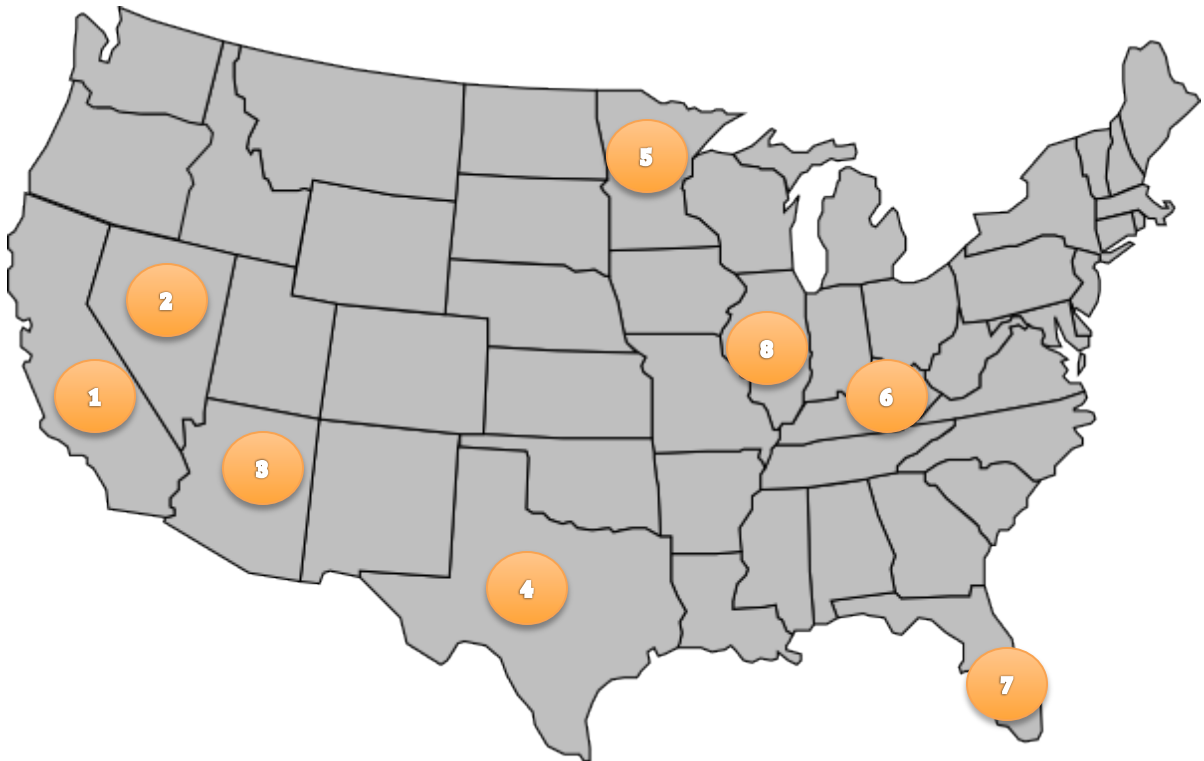
### **FEDERAL**

- US Army Corps of Engineers
- General Services Administration
- US Air Force, Nellis Air Force Base
- US Air Force, March Air Force Base
- National Archives and Records Administration
- US Army
- Department of Veteran Affairs

### **COMMUNITY PROJECTS**

- Tenant Improvements, Faithful Central Church
- Rehab Housing, Jenesse Center
- Beverly Hills Garden and Design Showcase
- Jeans for Justice, YWCA
- Gems to Jewels, I'm Every Woman
- Silver Rose, Jenesse Center
- Tenant Improvements, Restore Neighborhoods Los Angeles

## SERVICE AREAS



1. California
3. Arizona
5. Minnesota
7. Florida

2. Nevada
4. Texas
6. Kentucky
8. Illinois

**Affiliations:** Goldman Sachs 10,000 Small Business Alumni, National Association of Minority Contractors, National Association of Women Business Owners, American Society of Interior Designers, International Interior Design Association, Painting and Decorating Contractors of America, National Council for Interior Design Qualification

## **Décor Interior Design, Inc.**

2937 East 4<sup>th</sup> Street Los Angeles, CA 90033

TEL 310-289-2186

FAX 310-289-2189

